

State of Wyoming Corner Record

(In compliance with the **CORNER PERPETUATION AND FILING ACT**, Wyoming Statutes, 1997 Section 33-29-140 et. seq., and the Rules and Regulations of the Board of Professional Engineers and Professional Land Surveyors)

Reverse side of this form may be used if more space is needed.

Record of original survey and citation of source of historical information (if corner is lost or obliterated). Description of corner monumentation evidence found and/or monument and accessories established to perpetuate the location of this corner. Sketch of relative location of monument, accessories, and reference points with course and distance to adjacent corner(s) (if determined in this survey). Method and rationale for reestablishment of lost or obliterated corner.

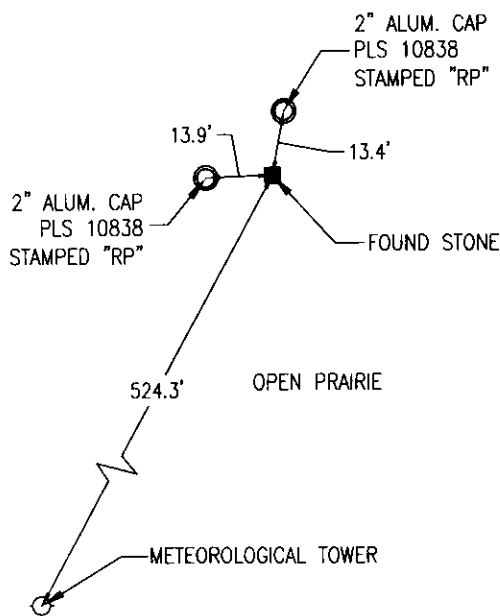
FOUND: FOUND ORIGINAL GLO STONE WITH 4 VISIBLE SCRIBES, CLOSING CORNER TO STATE LINE (COLORADO TERRITORY). STONE IS SANDSTONE, WELL WEATHERED AND IS 14x10x9. REFERENCED AS SHOWN.

SET: NOTHING

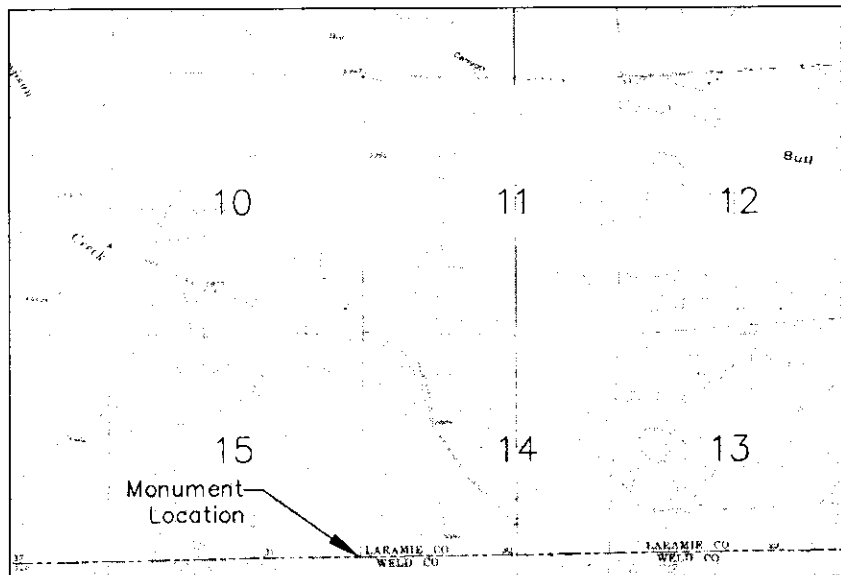
TIES: N89°33'51"E, 5237.05' TO THE CLOSING CORNER (FOUND ALUMINUM CAP COLORADO PLS 9911 & STONE) ON THE NORTH LINE COLORADO TERRITORY BETWEEN SECTION 13 AND 14.

S89°27'10"W, 5357.27' TO THE FOUND STONE CLOSING CORNER FOR THE NORTH LINE OF THE COLORADO TERRITORY BETWEEN SECTIONS 15 AND 16.

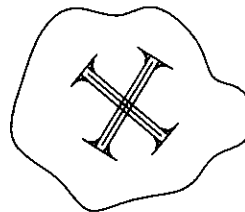
HISTORY: THE SUBDIVISIONS WERE DONE IN 1868 BY E. D. BRIGHT. THE PLATS AND ORIGINAL FIELD NOTES WERE OBTAINED FROM THE BLM. THE CLOSINGS ON THE BOUNDARY OF THE COLORADO-WYOMING TERRITORIES WERE ACCOMPLISHED IN 1874 BY FOWLER AND JOHNNIGER(sp). THE PLATS AND ORIGINAL FIELD NOTES WERE OBTAINED FROM THE BLM.



Location Sketch
1" = 30'



Monument location



FOUND STONE
14" X 10" X 9"
4 VISIBLE SCRIBES
STONE SEVERLY WEATHERED

Monument Inscription

Date of Field Work: 7/11/07

Office Reference: 2730

Cross Index Plat

	1	2	3	4	5	6	7	8	9	10	11	12	13	14	15	16	17	18	19	20	21	22	23	24	25	
A	+	+	+	+	+	+	+	+	+	+	+	+	+	+	+	+	+	+	+	+	+	+	+	+	+	A
B	+	+	+	+	+	+	+	+	+	+	+	+	+	+	+	+	+	+	+	+	+	+	+	+	+	B
C	+	6	+	5	+	4	+	3	+	2	+	1	+	+	+	+	+	+	+	+	+	+	+	+	+	C
D	+	+	+	+	+	+	+	+	+	+	+	+	+	+	+	+	+	+	+	+	+	+	+	+	+	D
E	+	+	+	+	+	+	+	+	+	+	+	+	+	+	+	+	+	+	+	+	+	+	+	+	+	E
F	+	+	+	+	+	+	+	+	+	+	+	+	+	+	+	+	+	+	+	+	+	+	+	+	+	F
G	+	7	+	8	+	9	+	10	+	11	+	12	+	+	+	+	+	+	+	+	+	+	+	+	+	G
H	+	+	+	+	+	+	+	+	+	+	+	+	+	+	+	+	+	+	+	+	+	+	+	+	+	H
J	+	+	+	+	+	+	+	+	+	+	+	+	+	+	+	+	+	+	+	+	+	+	+	+	+	J
K	+	+	+	+	+	+	+	+	+	+	+	+	+	+	+	+	+	+	+	+	+	+	+	+	+	K
L	+	18	+	17	+	16	+	15	+	14	+	13	+	+	+	+	+	+	+	+	+	+	+	+	+	L
M	+	+	+	+	+	+	+	+	+	+	+	+	+	+	+	+	+	+	+	+	+	+	+	+	+	M
N	+	+	+	+	+	+	+	+	+	+	+	+	+	+	+	+	+	+	+	+	+	+	+	+	+	N
O	+	+	+	+	+	+	+	+	+	+	+	+	+	+	+	+	+	+	+	+	+	+	+	+	+	O
P	+	19	+	20	+	21	+	22	+	23	+	24	+	+	+	+	+	+	+	+	+	+	+	+	+	P
Q	+	+	+	+	+	+	+	+	+	+	+	+	+	+	+	+	+	+	+	+	+	+	+	+	+	Q
R	+	+	+	+	+	+	+	+	+	+	+	+	+	+	+	+	+	+	+	+	+	+	+	+	+	R
S	+	+	+	+	+	+	+	+	+	+	+	+	+	+	+	+	+	+	+	+	+	+	+	+	+	S
T	+	30	+	29	+	28	+	27	+	26	+	25	+	+	+	+	+	+	+	+	+	+	+	+	+	T
U	+	+	+	+	+	+	+	+	+	+	+	+	+	+	+	+	+	+	+	+	+	+	+	+	+	U
V	+	+	+	+	+	+	+	+	+	+	+	+	+	+	+	+	+	+	+	+	+	+	+	+	+	V
W	+	+	+	+	+	+	+	+	+	+	+	+	+	+	+	+	+	+	+	+	+	+	+	+	+	W
X	+	31	+	32	+	33	+	34	+	35	+	36	+	+	+	+	+	+	+	+	+	+	+	+	+	X
Y	+	+	+	+	+	+	+	+	+	+	+	+	+	+	+	+	+	+	+	+	+	+	+	+	+	Y
Z	+	+	+	+	+	+	+	+	+	+	+	+	+	+	+	+	+	+	+	+	+	+	+	+	+	Z
	1	2	3	4	5	6	7	8	9	10	11	12	13	14	15	16	17	18	19	20	21	22	23	24	25	

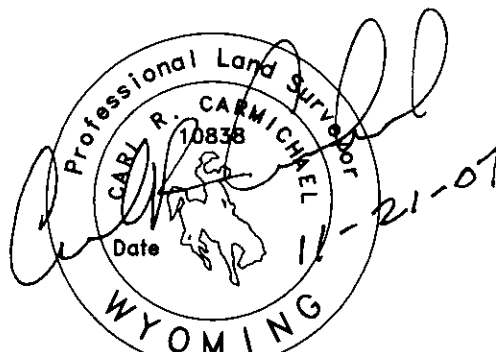
Firm/Agency, Address

AVI P.C.
2035 WESTLAND RD.
CHEYENNE, WY. 82001

Telephone Number: 307-637-6017

This corner record was prepared by me or under my direction and supervision.

SEAL & SIGNATURE



RECORDED 11/21/2007 AT 10:34 AM REC# 488238 JK# 2034 PG# 1048
DEBRA K. LATHROP, CLERK OF LARAMIE COUNTY, WY PAGE 1 OF 1

Corner Name Closing Corner Section CC to Colorado Territory on the Line Between Sections 14 and 15, T12N, R65W, 6th P.M. County: Laramie Wyoming

SBRPEPLS/PLSW: March 1994; PLSW January 1998

Cross-Index No.: N.2-17